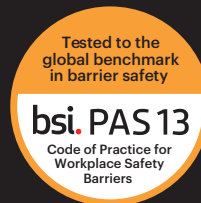
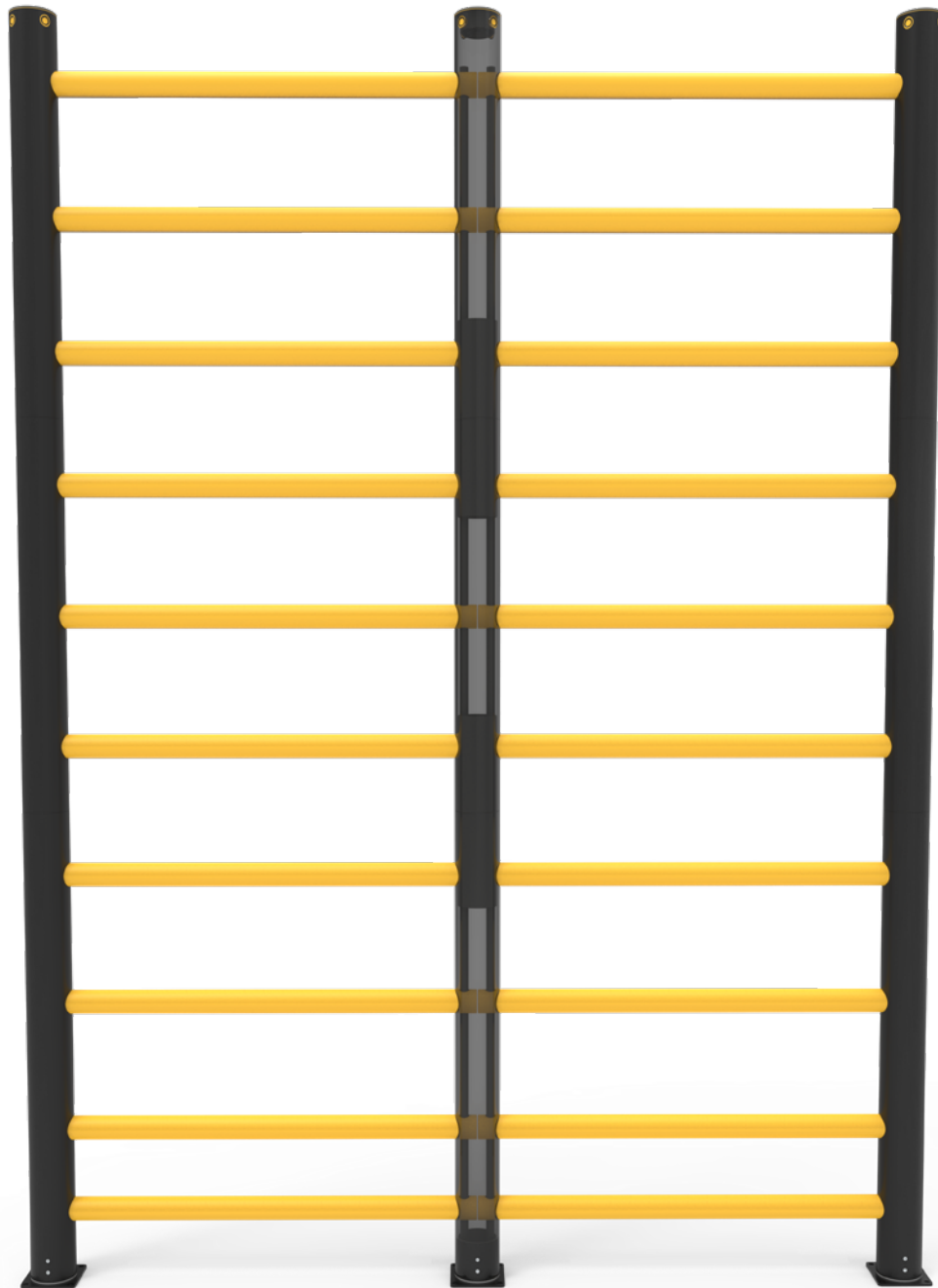


# Topple Barrier

Designed to segregate pedestrians and protect them from the danger of toppling bulk goods, the Topple Barrier is a robust solution that offers excellent levels of protection in multiple height variations.

This fully modular system can be tailored to suit both high and low-level storage areas, while the proven fork-impact protection of the ForkGuard is included as standard.





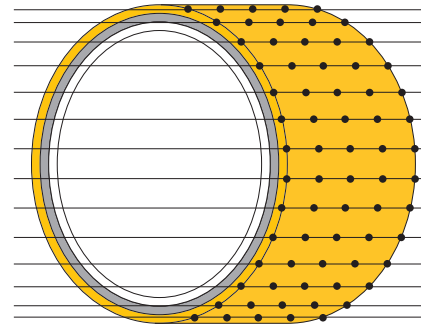
# MEMAPLEX™

## Ultimate strength polymer

created from an exclusive composition of the most sophisticated polyolefins and rubber additives, expertly blended for unequalled strength and flexibility.

## Advanced Engineering Molecular

reorientation during manufacturing creates a unique built-in memory that enables the barrier to fully recover following impacts.



### Revolutionary 3-Layered Material

- Inner strengthening core
- Central impact absorption zone
- Outer UV stabilised colour layer

## Configurations



Base + 3 Rails  
Height - 3600mm



Base + 6 Rails  
Height - 5300mm

## Suitability

Application



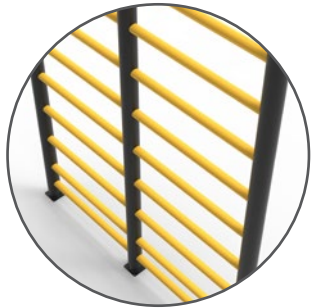
Suitable for pedestrians



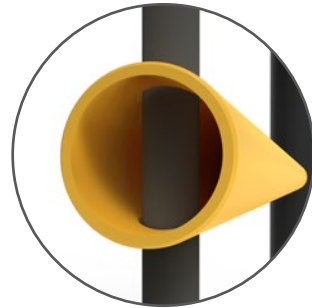
Unrivalled recovery through a unique built-in memory that allows the barrier to flex, cushion and reform repeatedly upon impact, saving vast amounts in barrier and vehicle repairs.

Huge return on investment from incident prevention and downtime avoidance as barriers, vehicles, floors and equipment do not need replacing or repair.

## Features and benefits



Ultra-low maintenance material is chemical and water resistant, non-corrosive, non-scratch and self coloured so no repainting, rusting, flaking or corrosion.



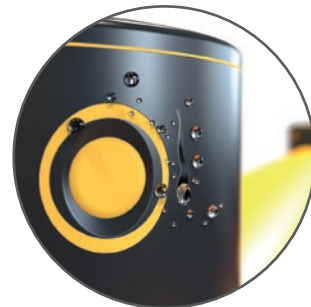
Exclusive modularity allows rails and posts to be replaced in-situ without removing adjacent barrier sections.



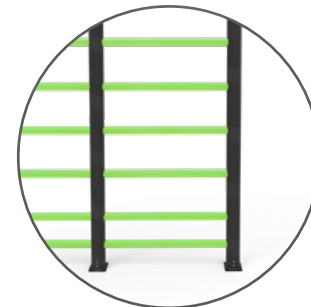
Self coloured and UV stabilised for continued visibility and long lasting aesthetics with no repainting.



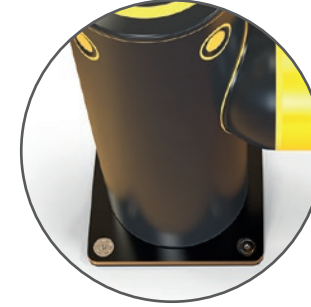
Ergonomic design with no sharp edges.



Wipe-clean, water resistant surface.



Environmentally friendly and 100% recyclable.

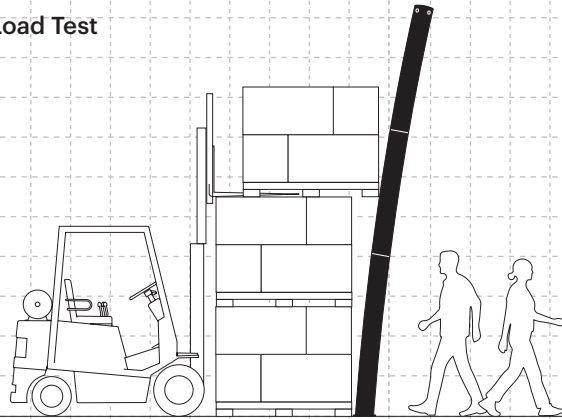


Zinc nickel, electrophoretic coating on base plates as standard, provides advanced protection against corrosion damage.



# Technical Information

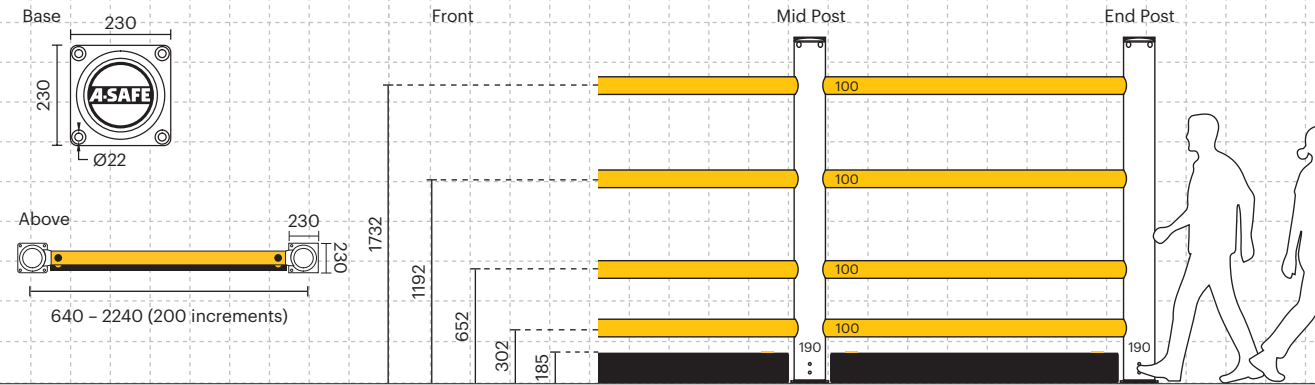
## Load Test



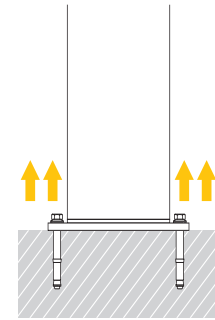
**400kg Horizontal Point Load**

**1000kg Horizontal Distributed Load**

## Dimensions (mm)



## Force to Bolt 33kN



## Impact Test

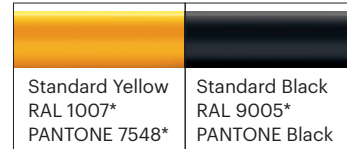
End Post Max Energy (Joules) - 90°	6,900
Mid Post Max Energy (Joules) - 90°	6,900

Material Properties	MEMAPLEX™
Temperature Range	-10°C to 50°C
Ignition Temperature	370°C to 390°C
Flash Point	350°C to 370°C
Toxicity	Not Hazardous
Chemical Resistance	Excellent - ISO/TR 10358
Weathering Stability (Grey Scale)	5/5*
Light Stability (Blue Wool Scale)	7/8**
Static Rating (Surface Resistivity)	1015 - 1016 Ω

## Post Options



## Rail Options



## Colour Combinations

\*Please note that the RAL and PANTONE colours listed are the closest match to standard A-SAFE colours, but may not be exact matches of the actual product colour and should be used for guidance only.

\* Weathering scale 1 is very poor and 5 is excellent  
\*\* Light stability scale 1 is very poor and 8 is excellent

