



Step Guard

The Step Guard offers unprecedented heavy-duty low-level protection that prevents injuries and damage in vehicle charging areas, goods holding areas and pedestrian walkways.

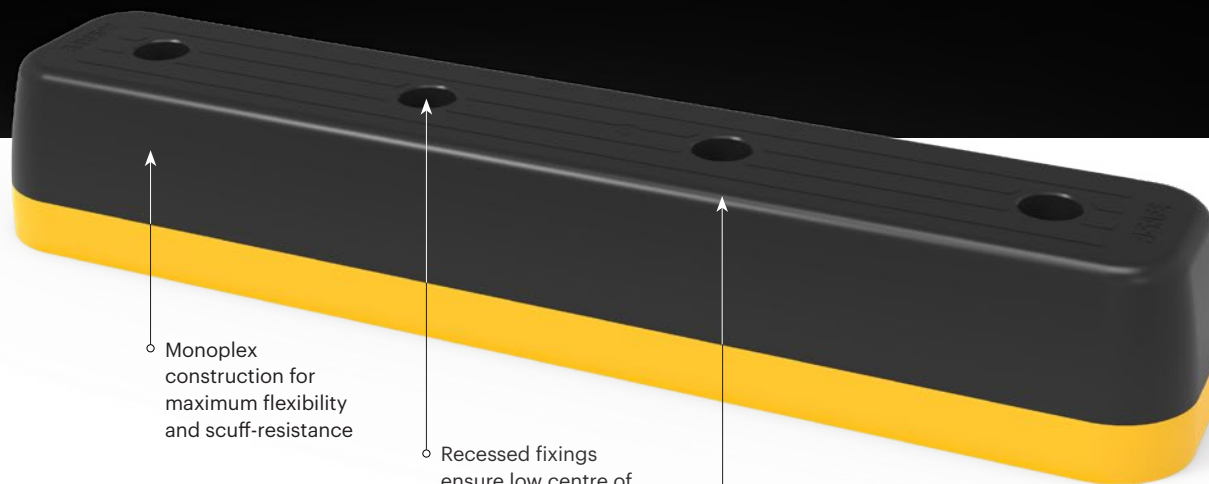
The dangers in these areas of the workplace can lead to pedestrian injuries, damaged infrastructure and costly downtime.



Unrivalled recovery through a unique built-in memory that allows the Step Guard to repeatedly flex, cushion and reform upon impact.

Significant return on investment through incident prevention and downtime avoidance, as Step Guards do not require replacement or repair.

Available sizes (mm)



Monoplex construction for maximum flexibility and scuff-resistance

Recessed fixings ensure low centre of gravity and minimal loading to floor

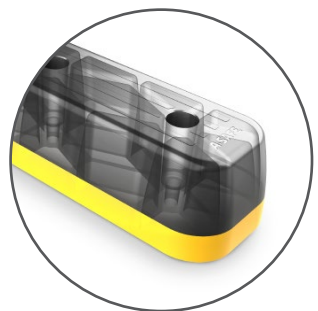
Ergonomic design with no sharp edges

Seals reduce the risk of water ingress.

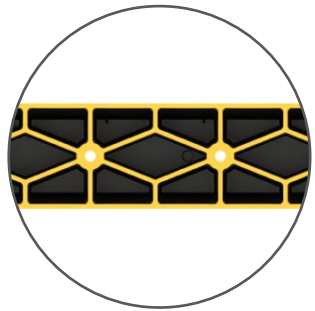
Features and benefits



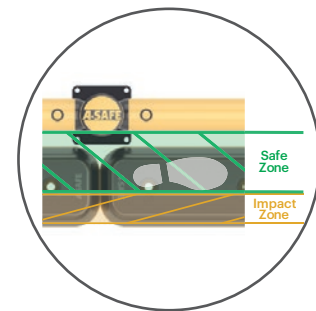
The twin layered Monoplex product offers a softer upper layer which dissipates energy whilst the lower harder layer provides rigidity around the fixing holes. This ensures the Step Guard remains strong under impact and distributes energy across the product, reducing the risk of damage and minimizes the risk of fixings pulling out of the ground.



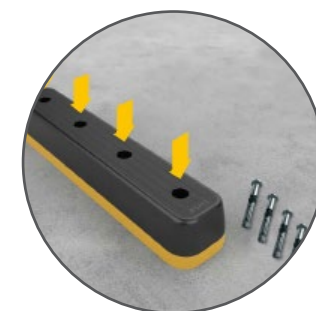
Monoplex is a new material innovation that is revolutionising impact protection in industrial workplaces worldwide. Precision-engineered and produced in the UK using state-of-the-art materials and manufacturing technology, Monoplex safety products offer unprecedented levels of versatility, durability, and performance across multiple impacts.



Heavy duty vehicles operating within shared workspaces such as charging points require products which can withstand high impacts. The supporting internal rib structure provides strength throughout the product to ensure the Step Guard doesn't crumple under impact and can return to its original form.



This illustration shows a Safe Zone created by the rigidity of the Step Guard. In the eventuality that a vehicle continues to move after the driver has dismantled.

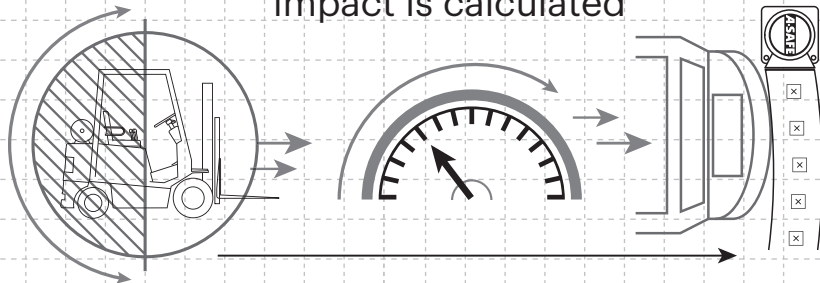


The Step Guard is easy to install with a maximum of 4 x M16 – OD24mm Bolt Type Head fixings (1200mm version) per Step Guard. This means that the product can be installed or replaced quickly with a minimum amount of disruption on site.



Technical Information

How the energy from a vehicle impact is calculated



$$\frac{1}{2} \text{ Mass} \times \text{Speed}^2 = \text{Joules}$$

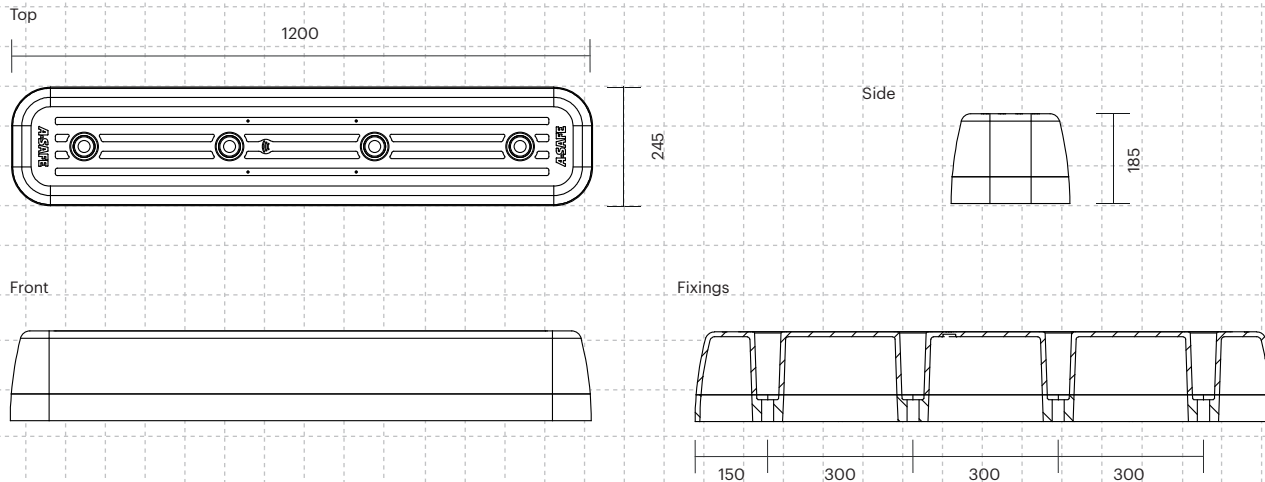
Tested Impact Energy

15,800 Joules

Equivalent vehicle and speed


6.4 tonne X **5 mph** impact
 90° Impact on Step Guard

Dimensions (mm)



Product weights

Step Guard 1200	18kg / 40lbs	15,800 Joules
Step Guard 900	14kg / 31lbs	15,800 Joules
Step Guard 600	9kg / 20lbs	10,400 Joules

Colours

TOP LAYER	BOTTOM LAYER
Standard Black RAL 9005* PANTONE Black	Standard Yellow RAL 1007* PANTONE 7548*

Material Properties

MONOPLEX™

Temperature Range	5°C to 40°C
Ignition Temperature	>400°C
Flash Point	350°C to 370°C
Toxicity	Not Hazardous
Chemical Resistance	Excellent - ISO/TR 10358
Weathering Stability (Grey Scale)	5/5*
Light Stability (Blue Wool Scale)	7/8**
Static Rating (Surface Resistivity)	1015 - 1016 Ω

* Weathering scale 1 is very poor and 5 is excellent

** Light stability scale 1 is very poor and 8 is excellent

A-SAFE UK Ltd

Ainley House, Ainleys Industrial Estate, Elland, Halifax, HX5 9JP, United Kingdom

www.asafe.com

