



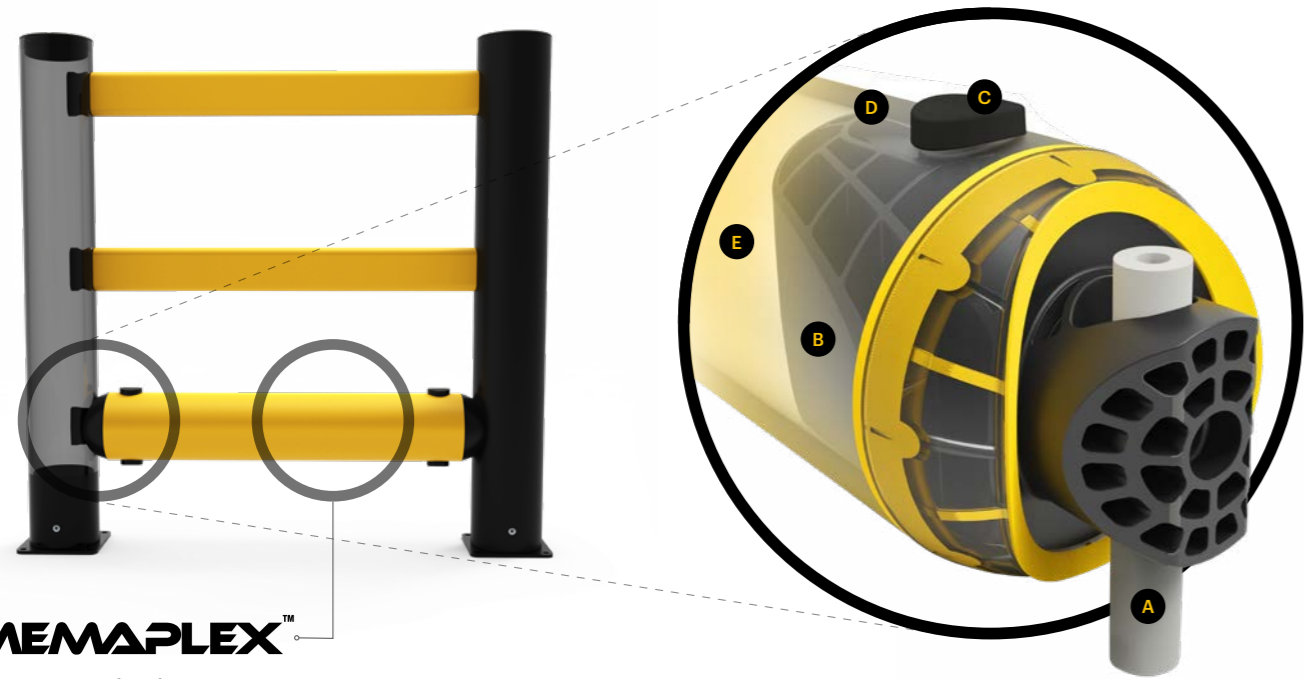
eFlex Single Traffic Guardrail+

Designed to protect people from injury, and safeguard buildings and equipment from damage both inside and out.

The mid-strength, dual-function guardrail isolates vehicles whilst also guiding pedestrians. The traffic rail provides physical resistance to impacts. The addition of an ergonomic handrail increases the height to segregate pedestrians and prevent falls.

Ideal for mid-traffic areas where people and vehicles mix, and for build base specifications.

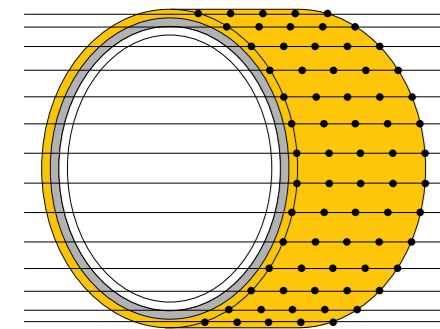




MEMAPLEX™

Ultimate strength polymer created from an exclusive composition of the most sophisticated polyolefins and rubber additives, expertly blended for unequalled strength and flexibility.

Advanced Engineering Molecular reorientation during manufacturing creates a unique built-in memory that enables the guardrail to fully recover following impacts.



Revolutionary 3-Layered Material

- Inner strengthening core
- Central impact absorption zone
- Outer UV stabilised colour layer

Energy Absorption System

A patented 3-phase system that activates sequentially for unparalleled energy absorption.

- 1 Memaplex™ rail flexes to absorb impact, initiating the rail pin to slide forward and transfer load energy to the compression pocket.
- 2 Compression of the pocket continues to disperse energy as the coupling rotates around the post pin to activate further absorption.
- 3 At peak energy, the coupling twists further, engaging the post pin and instigating torsion of the post to dispel remaining forces.

- | | |
|-------------------|-----------------------------|
| A Post Pin | D Compression Pocket |
| B Coupling | E Rail |
| C Rail Pin | |

Suitability

Vehicle



Engine counterbalance heavy duty FLT



Heavy duty counterbalance FLT



Electric high reach truck



Horizontal Order Picker

Application



Protects structures



Protects machinery



Protects Pedestrians

Unrivalled recovery through a unique built-in memory that allows the guardrail to flex, cushion and reform repeatedly upon impact, saving vast amounts in barrier and vehicle repairs.

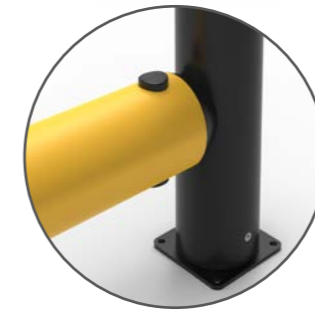


Huge return on investment from incident prevention and downtime avoidance as guardrails, vehicles, floors and equipment do not need replacing or repair.

Features and benefits



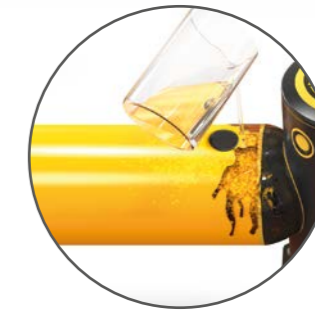
Multi-directional system ensures a streamlined fit into any operation and the removal of hard angles.



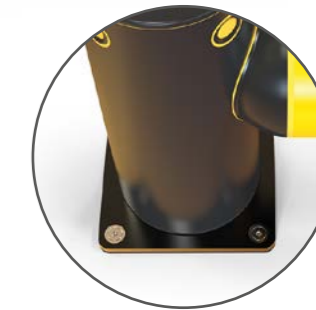
Ultra-low maintenance material is chemical and water resistant, non-corrosive, non-scratch and self coloured so no repainting, rusting, flaking or corrosion.



Exclusive modularity allows rails and posts to be replaced in-situ without removing adjacent barrier sections.



Hygiene seals remove ingress points.



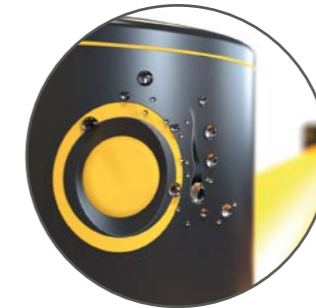
Zinc nickel, electroplated coating on base plates as standard, provides advanced protection against corrosion damage.



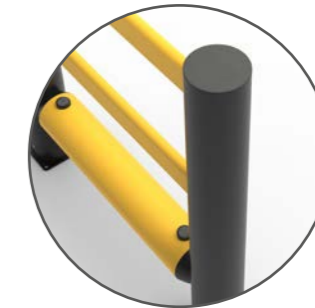
Self coloured and UV stabilised for continued visibility and long lasting aesthetics with no repainting.



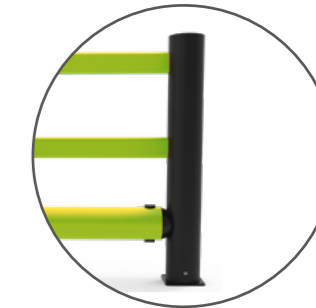
No floor damage 80% of impact force is absorbed, transferring just 20% to the floor.



Food safe, wipe-clean, water resistant surface.



Ergonomic design with no sharp edges.

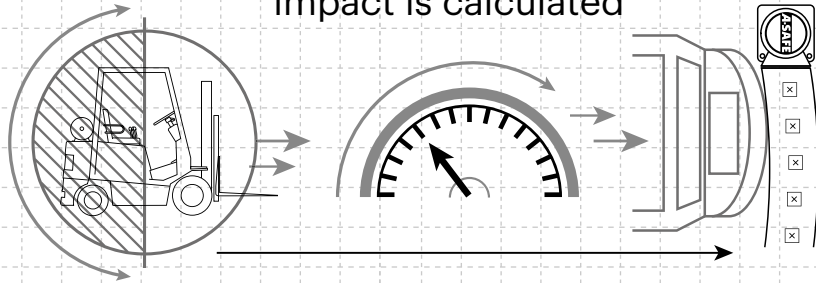


Environmentally friendly and 100% recyclable.



Technical Information

How the energy from a vehicle impact is calculated



$$\frac{1}{2} \text{ Mass} \times \text{Speed}^2 = \text{Joules}$$

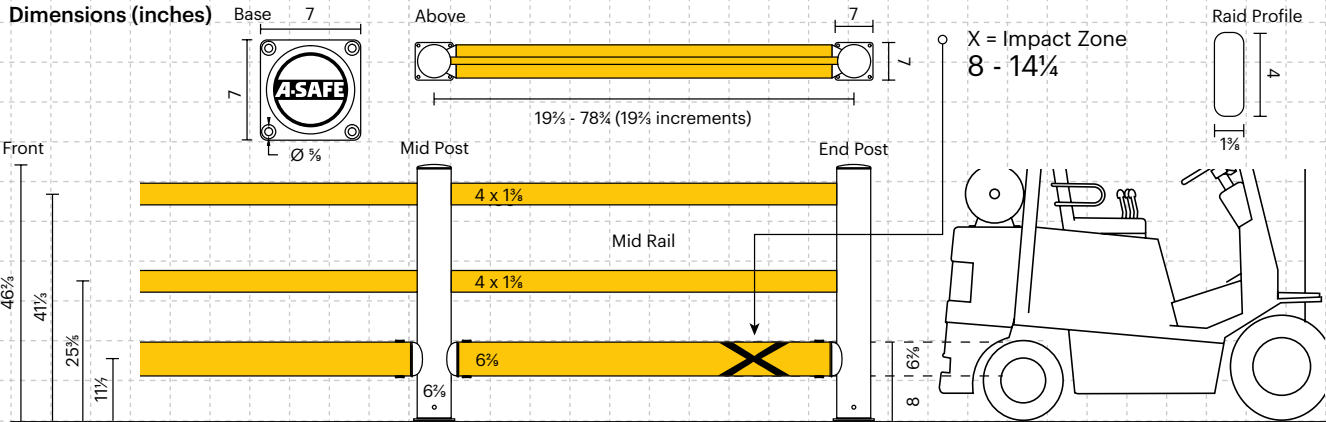
Tested Impact Energy

20,400 Joules

Equivalent vehicle and speed

6.2 ton X **6 mph impact**

Mid Rail 45° Impact on 78% Post Centres



Impact Test	Impact Angle on 78% Post Centres			
	90°	67.5°	45°	22.5°
Mid Rail Max Energy (Joules)	10,200	11,950	20,400	69,650

End Post Max Energy (Joules) - 90°	3,600
Mid Post Max Energy (Joules) - 90°	3,600

Deflection at Max Energy 17%

Force to Bolt 13kN

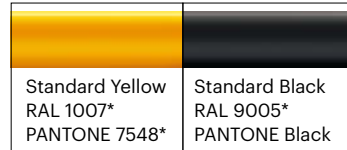
Material Properties	MEMAPLEX™
Temperature Range	14°F to 122°F
Ignition Temperature	698°F to 734°F
Flash Point	662°F to 698°F
Toxicity	Not Hazardous
Chemical Resistance	Excellent - ISO/TR 10358
Weathering Stability (Grey Scale)	5/5*
Light Stability (Blue Wool Scale)	7/8**
Static Rating (Surface Resistivity)	1015 - 1016 Ω
Hygiene Seals	No

* Weathering scale 1 is very poor and 5 is excellent
** Light stability scale 1 is very poor and 8 is excellent

Post Options



Rail Options



Color Combinations

*Please note that the RAL and PANTONE colors listed are the closest match to standard A-SAFE colors, but may not be exact matches of the actual product color and should be used for guidance only.

