



Single RackEnd Barrier Cold Storage

The Cold Storage Single RackEnd Barrier is engineered for use in cold storage facilities. It is designed to protect the ends of racking aisles, where turning vehicles can impact vulnerable racking structures.

Engineered from Memaplex™ SubZero, the barrier flexes to absorb and deflect repeated impacts from materials handling vehicles without cracking, fragmenting or causing floor damage.

Circular end posts and innovative spinning collars at impact-prone barrier ends further deflect and dissipate impact energy, enhancing protection and reducing loading to floor substrates and fixings.



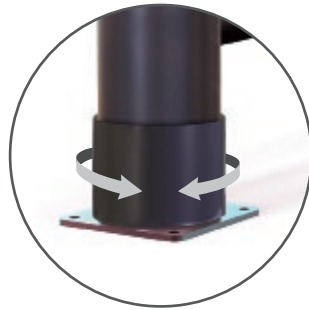
Unrivalled recovery through a unique built-in memory that allows the barrier to flex, cushion and reform repeatedly upon impact, saving vast amounts in barrier and vehicle repairs.

Huge return on Investment from incident prevention and downtime avoidance as rails, vehicles, floors and infrastructure do not need replacing or repair.

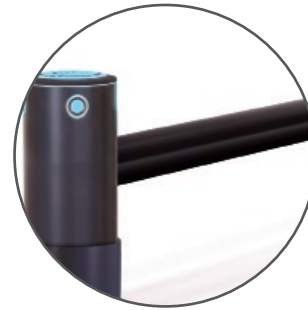
Features and benefits



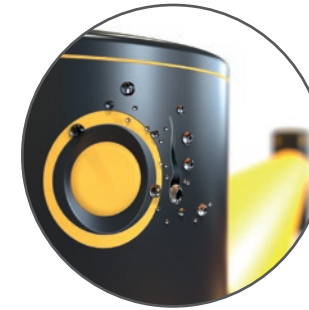
Self coloured and UV stabilised for continued high visibility and long lasting aesthetics with no repainting.



Rotating wear collars deflect force from repeat glancing blows preventing expensive on-going maintenance costs.



Memaplex™ advanced strength polymer created from an exclusive composition of the most sophisticated polyolefins and rubber additives, expertly blended for unequalled strength and flexibility.



Ultra-low maintenance material is chemical and water resistant, non-corrosive, non-scratch and self coloured so no repainting, rusting, flaking or corrosion.



Environmentally friendly and 100% recyclable.

Suitability

Vehicle



Lightweight Counterbalance FLT



Electric Pedestrian Stacker



Electric Pedestrian Truck



Manual Pallet Truck

Application



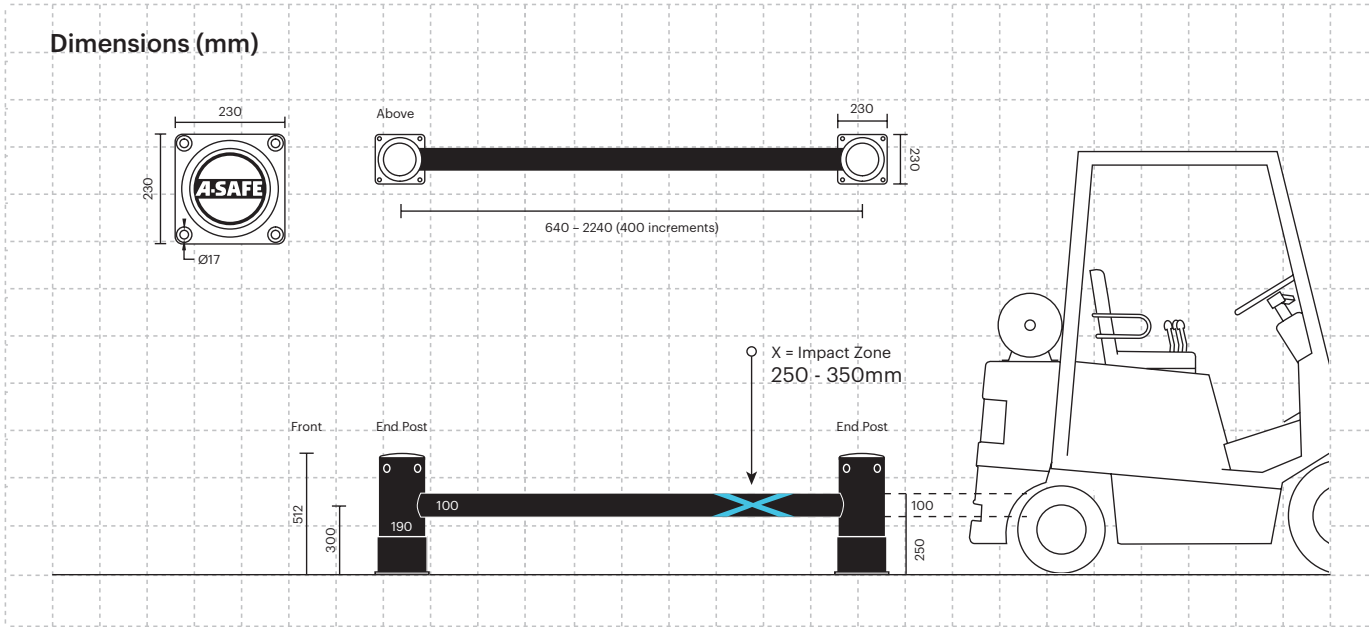
Racking Protection



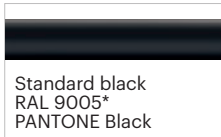
Cold Storage Protection



Technical Information



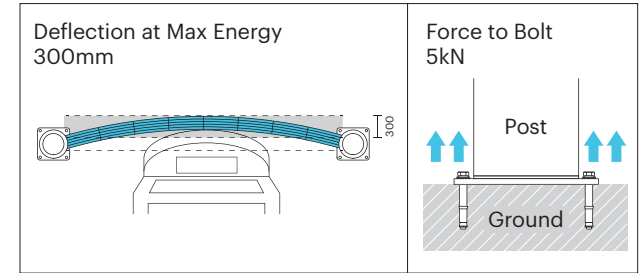
Colour Combinations



*Please note that the RAL and PANTONE colours listed are the closest match to standard A-SAFE colours, but may not be exact matches of the actual product colour and should be used for guidance only.

Impact Test	Impact Angle on 2000mm Post Centres			
	90°	67.5°	45°	22.5°
Mid Rail Max Energy (Joules)	4,000	4,686	8,000	27,314

End Post Max Energy (Joules) - 90°	3,600
------------------------------------	-------



Material Properties	MEMAPLEX™
Temperature Range	-30°C to 0°C
Ignition Temperature	370°C to 390°C
Flash Point	350°C to 370°C
Toxicity	Not Hazardous
Chemical Resistance	Excellent - ISO/TR 10358
Weathering Stability (Grey Scale)	5/5*
Light Stability (Blue Wool Scale)	7/8**
Static Rating (Surface Resistivity)	1015 - 1016 Ω

* Weathering scale 1 is very poor and 5 is excellent

** Light stability scale 1 is very poor and 8 is excellent

