



A-SAFE POLYMER: MAKING A POSITIVE  
IMPACT ON YOUR BUDGET

 **A-SAFE**  
PIONEERING WORKPLACE SAFETY

# INTRODUCTION



## Investment protection

In the search for the right solution to protect your investment – from employees to machinery or buildings – it is worth doing the research to make sure your latest investment, won't impact your budgets for years to come.

The benefits of using polymer over steel in your protection opens up a host of high ROI benefits.

Choosing A-SAFE polymer solutions brings even more benefits, with advanced engineering, material type and thousands of hours in Research & Development each year. We ensure A-SAFE solutions take the impact time and time again.



# MAINTENANCE



## Chipped paint. Rusted steel.

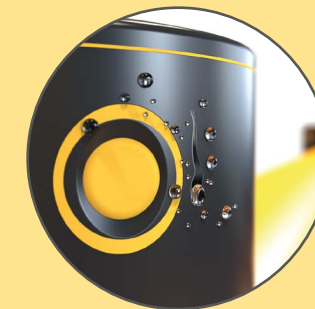
Undermaintained safety solutions shows your colleagues and customers that you miss the small details. This can lead to lost sales and even a lawsuit. The problem: regular maintenance costs money.

A-SAFE barriers stay bright and strong without ever needing to be repainted. This shows your colleagues and customers that you're serious about safety. Not only that, but A-SAFE barriers cost less over time, saving you money in the long run.



### Stay visible.

A-SAFE's polymer barriers are coloured during manufacturing, meaning they stay bright and visible without the need for regular repainting.



### Water resistant.

Being made from polymer, A-SAFE's barriers are inherently protected from the elements. This means no rust, and one less thing for you to worry about.



### Wipe clean.

Out of the box, A-SAFE polymer barriers are hygienic and wipe clean, making them suitable for all situations, including the pharmaceutical and the food and beverage industries.

# FREQUENT REPLACEMENTS

Throughout its lifetime steel costs more and more every year. From regular maintenance to one-off impacts, steel consistently eats away at your budget.

## One-hit wonder

Once steel is impacted, it buckles and needs to be replaced. These replacements can be costly and time consuming, damaging the environment around it.

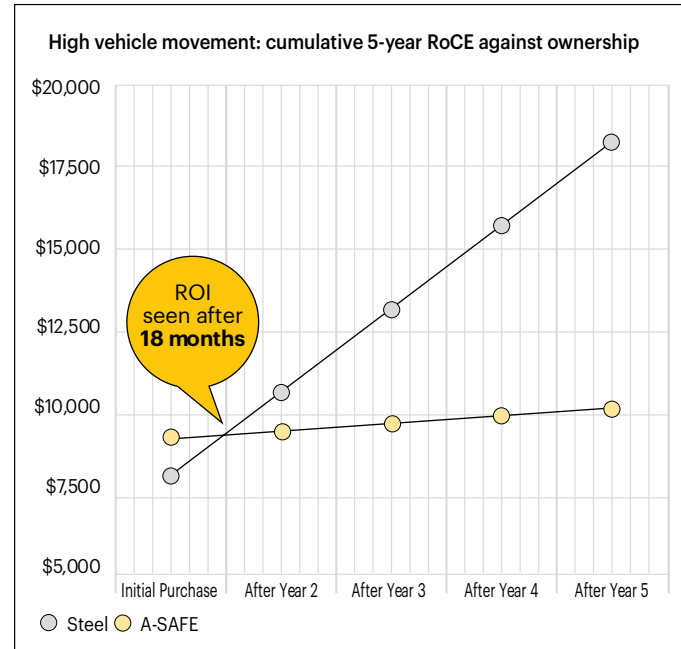
We collected data from a global logistics company to find out the long term costs of steel. Using A-SAFE's RackEye, we measured impacts on both polymer and steel guardrails over a 60-day period.

Based on an estimated labour cost of \$31.25 per hour, A-SAFE polymer barriers achieve ROI in 18 months. The labour costs include two hours to remove damaged guardrails, repair concrete floors and re-installations of new guardrail systems.



## Downtime

Frequent replacements increase downtime and reduce your facility's efficiency. Steel barriers don't just cost you money in the long term, but negatively affect your productivity.



## Corrosion

Over time, steel can become corroded due to exposure to the elements. Corrosion reduces a steel barrier's impact protection, making your people and assets less safe over its lifetime.

# THE A-SAFE DIFFERENCE



## Repeat impact protection

A-SAFE's polymer barriers are designed to take repeated impacts and recover. As they don't need to be replaced after each impact, they save you money in the long term.

A-SAFE's polymer barriers will give you a return on investment in 18 months, compared to the exponential costs of steel year-on-year.

## A modular system

A-SAFE safety barriers are built using a modular system. In the unlikely circumstance that one of our barriers does need to be replaced, we can replace only the section that has been affected, rather than the whole solution.

With steel and other polymer barriers, the whole section will need to be replaced, costing you more time and money with every impact.



# DAMAGE

Collisions with steel impact your bottom line

## Impact performance

Once a steel barrier has been impacted, in most cases its performance will be compromised. Unlike A-SAFE Polymer solutions, steel does not flex and recover from multiple impacts, requiring replacements more often, costing you more time and money.

## Additional costs

### Vehicle damage

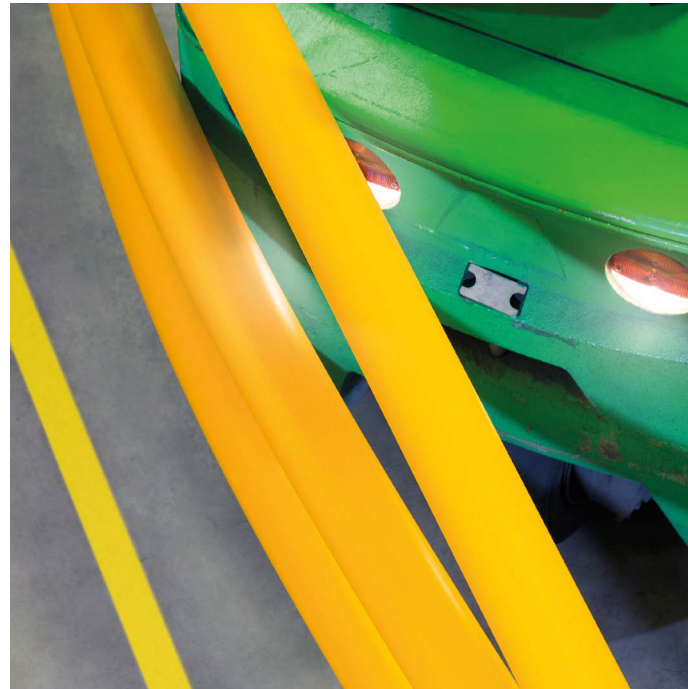
Even the smallest bumps and scrapes against a steel barrier can damage the aesthetics of your materials handling vehicles.

Heavier impacts can provide much more serious damage, reducing resale value or impact hire maintenance costs in the long run.

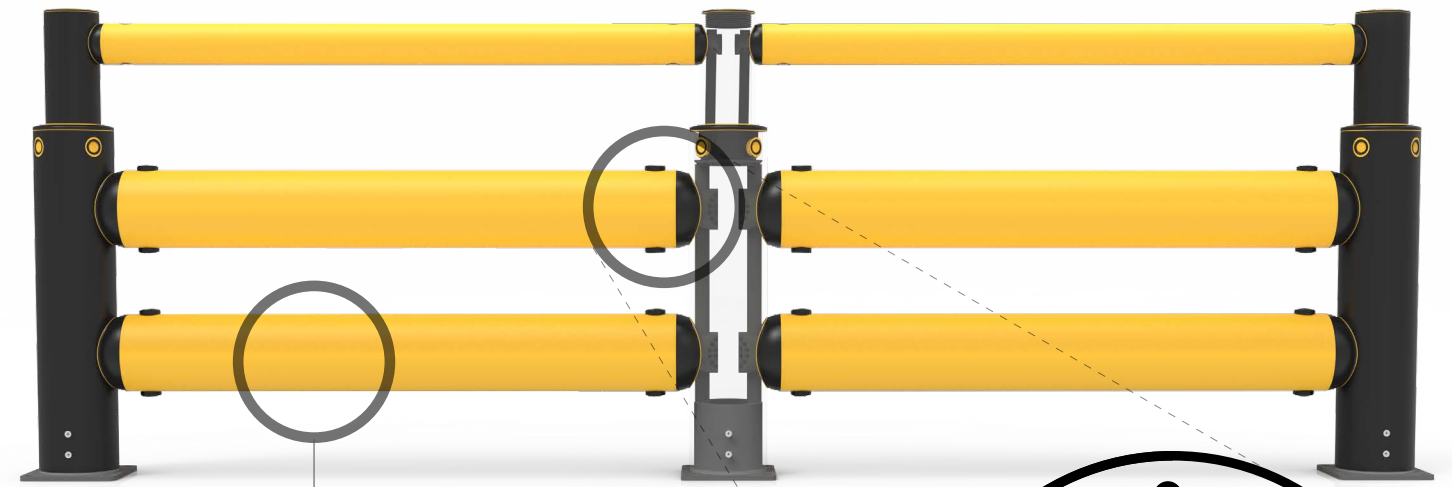
### Floor damage

The impact energy on steel safety solutions is re-routed to the floor fixings. This often results in damage to the flooring following an impact

Repairing this damage can be very costly, but the biggest impact could be to your operation. Repairing damaged floors downtime and areas of shutdown, putting the efficiency of your operation at risk.



# THE A-SAFE DIFFERENCE



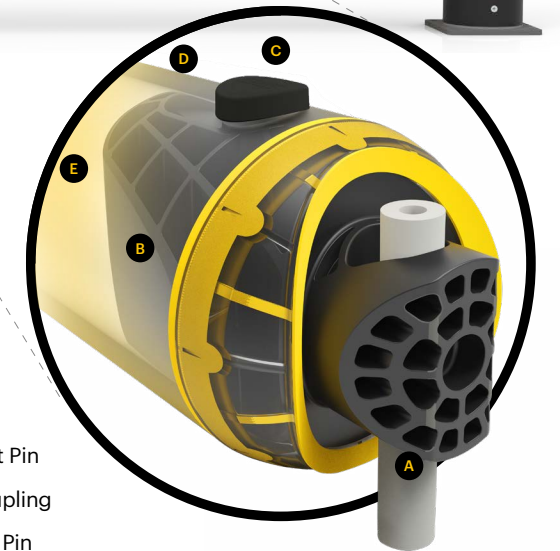
## Energy Absorption System

A-SAFE's safety barriers use a three-phase system for unparalleled energy absorption, which avoids floor damage:

- 1 The rail flexes, pulling a pin that transfers energy to the compression pocket
- 2 The compression pocket continues to disperse energy as the couple rotates around the pin
- 3 The connection twists further. This twists the post, dispersing any leftover energy.

## Material

With the energy absorption system and A-SAFE's Memaplex™ technology, our safety barriers don't just protect your people and assets, they protect your vehicles. By flexing, they save vehicles from damage and avoid you having to spend more on vehicle maintenance.



- A Post Pin
- B Coupling
- C Rail Pin
- D Compression Pocket
- E Rail

## Case study

### Katoen Natie improve operations and save costs

Find out how international logistics provider, Katoen Natie significantly reduced costs, including maintenance and repairs costs, by choosing A-SAFE Polymer solutions within their facilities.

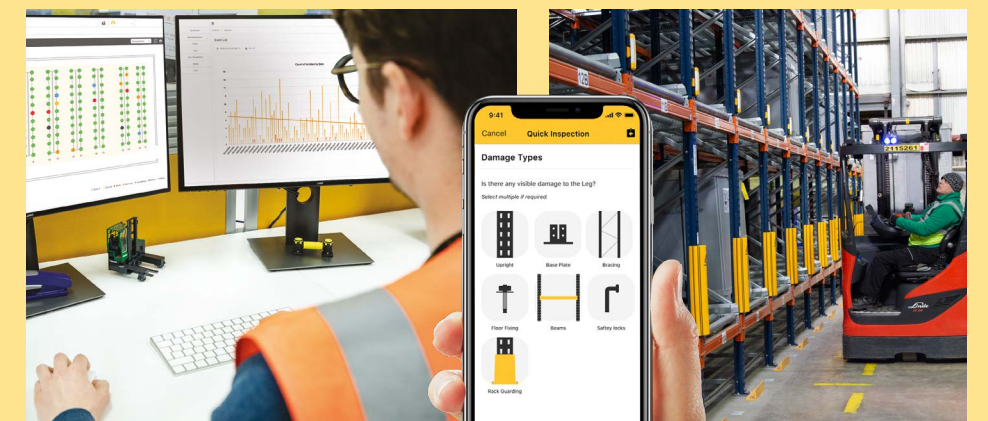
To learn more, scan the QR code or click here.

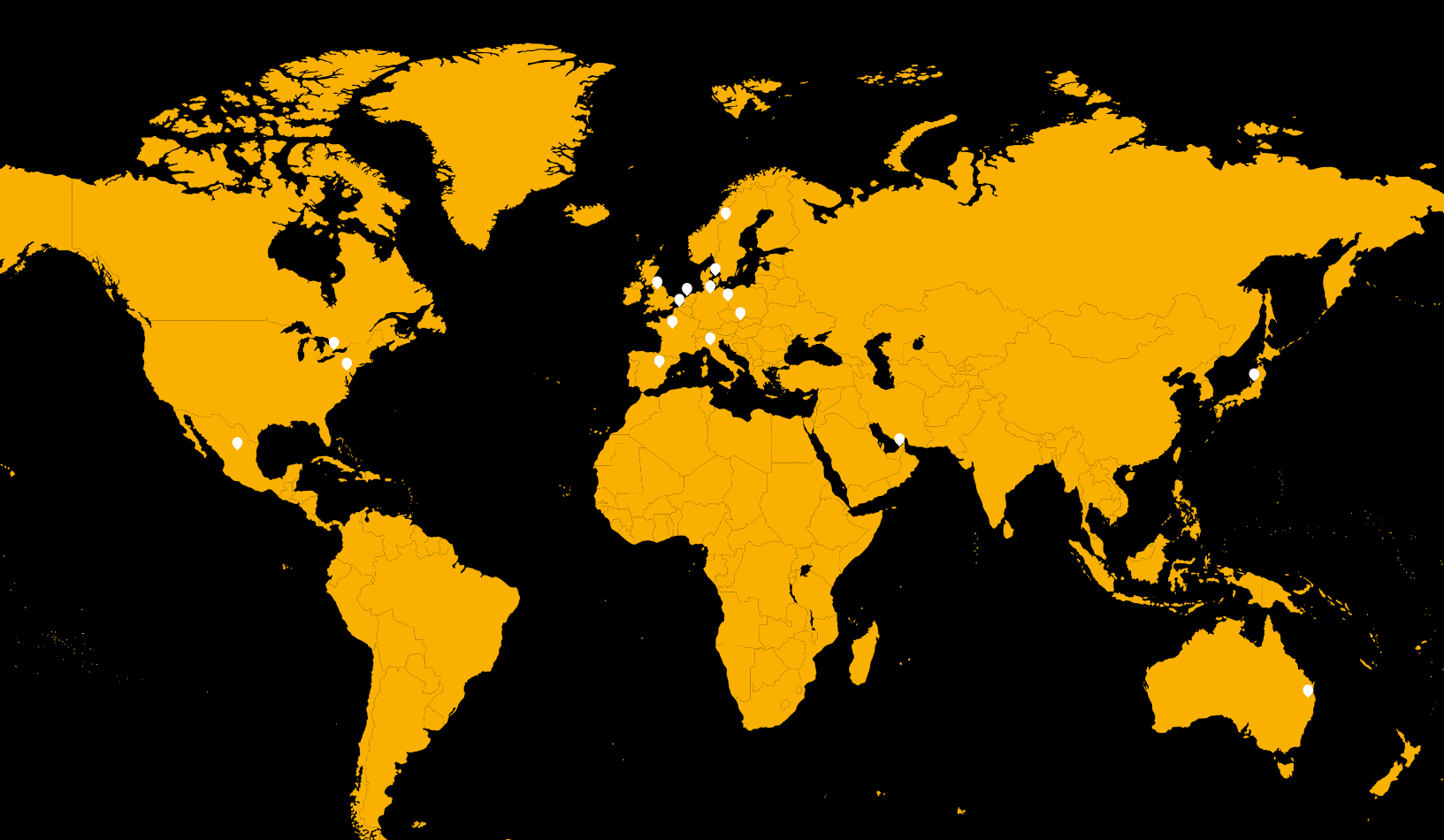


## Data reduces damage

RackEye helps you look after your warehouse day and night. It detects impacts to your racking and alerts you if attention is required.

RackEye gives you the ability to view a full history of impacts for the day, week or year. The insights you gain allow you to track incident trends and take preventative action, avoiding future collisions in the same place.





# A LOCAL COMPANY, GLOBALLY

We work hard to maintain the spirit of a local business while achieving the far-reaching impact of a global enterprise.

Our policy of being “Global and Local” enables us to respond to your needs wherever you are in the world. In every office worldwide, we employ local experts throughout the business. Specialists in their field, equipped with an in-depth knowledge of domestic markets, legislation, safety practices and social customs. We strive to give all workplaces access to world-class products, through local offices and consultants.

## GLOBAL OFFICES

A-SAFE Headquarters	Global	A-SAFE S.A. de C.V.	Mexico
A-SAFE Australasia PTY Ltd	Australia & New Zealand	A-SAFE B.V.	Netherlands
A-SAFE bvba	Belgium & Luxembourg	A-SAFE Sp. z o.o.	Poland
A-SAFE Canada Inc	Canada	A-SAFE Soluciones S.L.	Spain
A-SAFE Scandinavia ApS	Denmark	A-SAFE AB	Sweden
A-SAFE SAS	France	A-SAFE DWC-LLC	UAE
A-SAFE GmbH	Germany & Austria	A-SAFE UK Ltd	UK
A-SAFE Italia s.r.l.	Italy	A-SAFE Inc	USA
A-SAFE K.K.	Japan	A-SAFE International Ltd	Rest of the World

For contact information for your specific region, please visit [www.asafe.com](http://www.asafe.com)



A-SAFE Inc  
400 North Zarfoss Drive, York, PA 17404, USA  
(443) 776 3472 • [sales@asafe.us](mailto:sales@asafe.us)

