



ForkGuard Kerb Guardrail

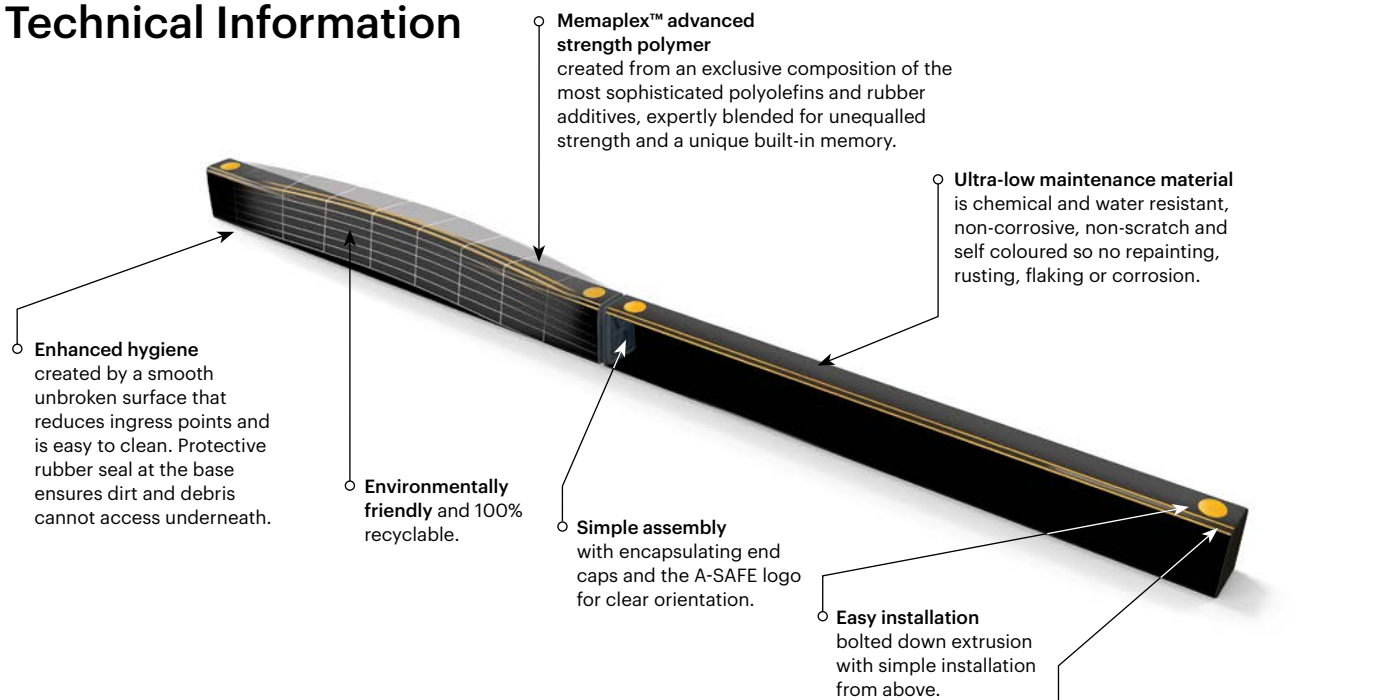
Designed to provide ground level protection for walls, buildings and equipment.

The ForkGuard deflects vehicle forks in shallow angle or low-force impacts. It also acts as a pallet stop or buffer preventing stored goods encroaching into pedestrian areas or walkways.

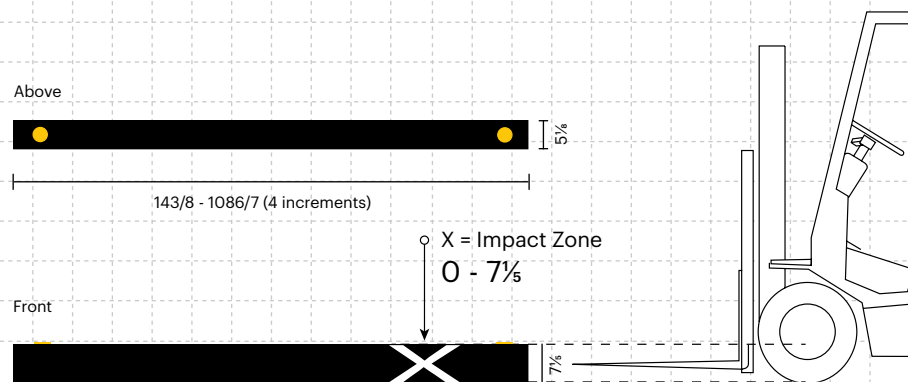
Floor mounted and bolted from above, the ForkGuard integrates with A-SAFE guardrails when installed together.



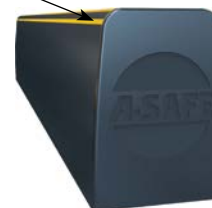
Technical Information



Dimensions (inches)



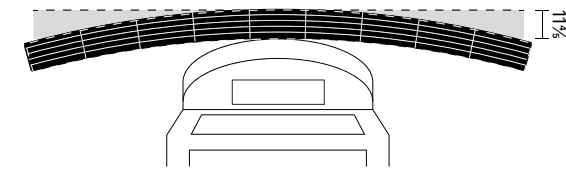
Engineered design
optimises the surface for impact recovery. Tapering at the top provides enhanced deflection to create a spring effect. Rounded corners remove stress raising parts that are susceptible to snapping.



Impact Test

Max Energy (Joules) at 90° **3,000**

Deflection at Max Energy **11 1/2 inches**



Material Properties	MEMAPLEX™
Temperature Range	14°F to 122°F
Ignition Temperature	698°F to 734°F
Flash Point	662°F to 698°F
Toxicity	Not Hazardous
Chemical Resistance	Excellent - ISO/TR 10358
Weathering Stability (Grey Scale)	5/5*
Light Stability (Blue Wool Scale)	7/8**
Static Rating (Surface Resistivity)	1015 - 1016 Ω
Hygiene Seals	No

* Weathering scale 1 is very poor and 5 is excellent

** Light stability scale 1 is very poor and 8 is excellent

Colour Combinations

Standard Black with Yellow Stripes RAL 9005* PANTONE Black	Standard Black with Grey Stripes RAL 9005* PANTONE Black
---	---

*Please note that the RAL and PANTONE colors listed are the closest match to standard A-SAFE colors, but may not be exact matches of the actual product color and should be used for guidance only.

