



# eFlex Double RackEnd Barrier

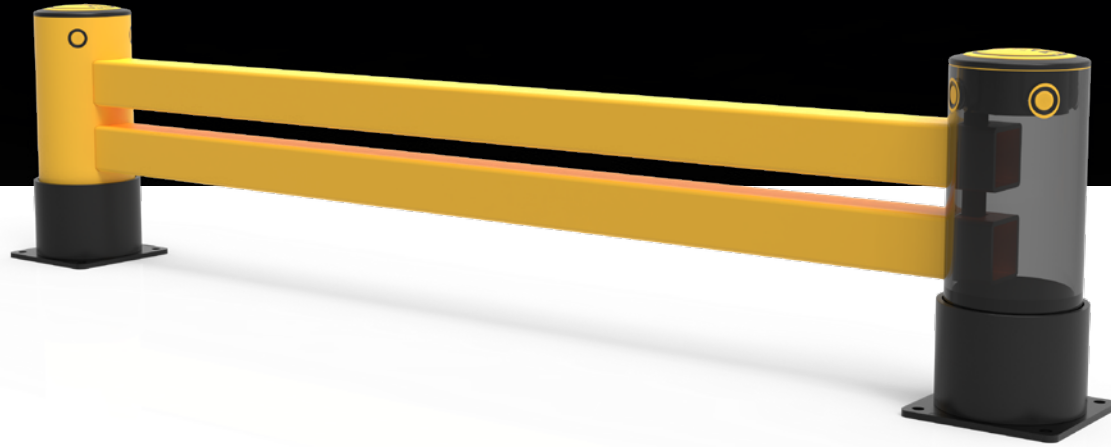
Designed to protect the end of racking aisles where turning vehicles and equipment can impact vulnerable racking structures.

The Double Rail version will absorb and deflect repeated contact from heavier vehicles with higher centres of gravity, preventing damage to racking systems.

The circular end posts provide enhanced protection at the barrier ends which are most susceptible to impact. Innovative spinning collars further deflect and dissipate impact forces.



Unrivalled recovery through a unique built-in memory that allows the barrier to flex, cushion and reform repeatedly upon impact, saving vast amounts in barrier and vehicle repairs.

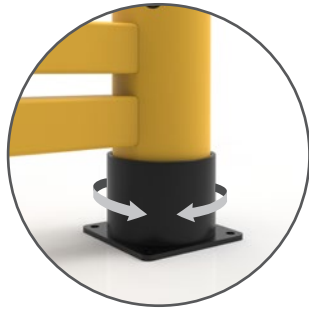


Huge return on Investment from incident prevention and downtime avoidance as rails, vehicles, floors and infrastructure do not need replacing or repair.

### Features and benefits



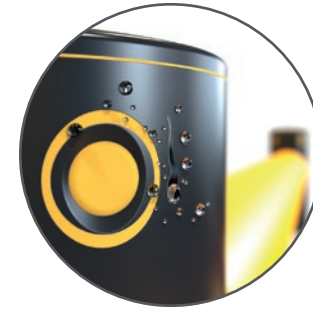
Self coloured and UV stabilised for continued high visibility and long lasting aesthetics with no repainting.



Rotating wear collars deflect force from repeat glancing blows preventing expensive on-going maintenance costs.



Memaplex™ advanced strength polymer created from an exclusive composition of the most sophisticated polyolefins and rubber additives, expertly blended for unequalled strength and flexibility.



Ultra-low maintenance material is chemical and water resistant, non-corrosive, non-scratch and self coloured so no repainting, rusting, flaking or corrosion.



Environmentally friendly and 100% recyclable.

### Suitability

Vehicle



Lightweight Counterbalance FLT



Electric Reach Truck



Electric Pedestrian Truck



Horizontal Order Picker

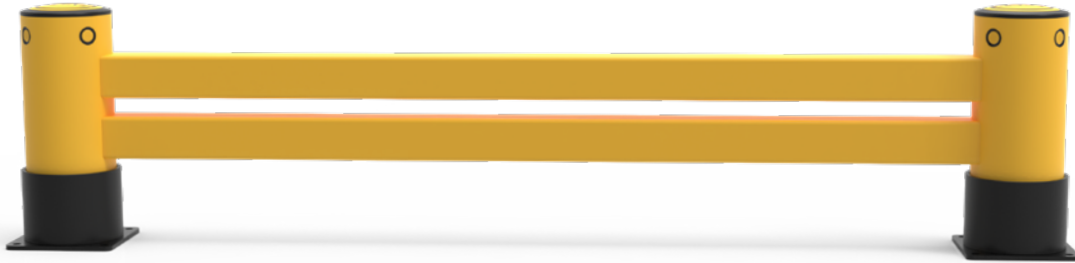
Application



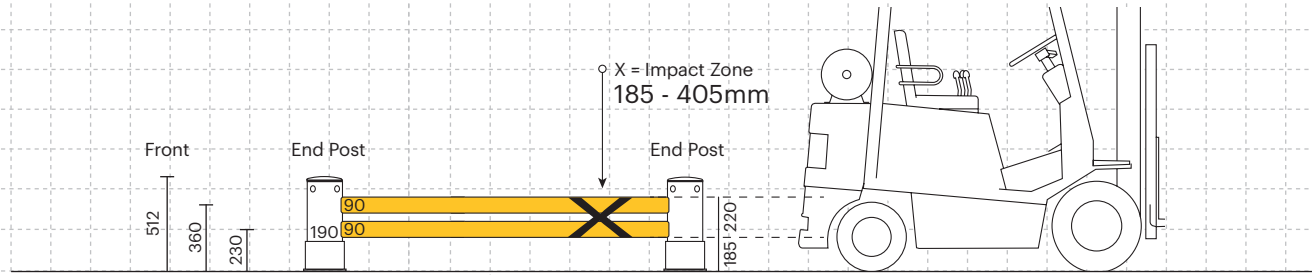
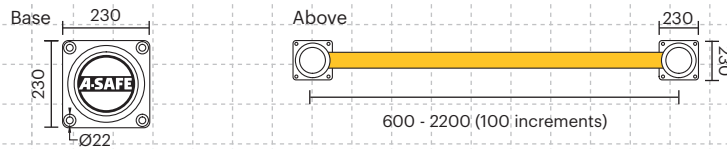
Racking Protection



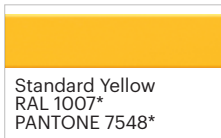
# Technical Information



## Dimensions (mm)



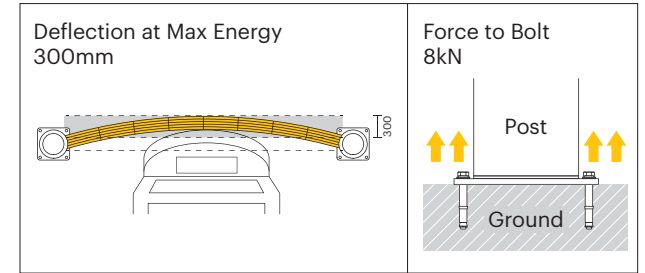
## Colour Combinations



\*Please note that the RAL and PANTONE colours listed are the closest match to standard A-SAFE colours, but may not be exact matches of the actual product colour and should be used for guidance only.

Impact Test	Impact Angle on 2000mm Post Centres			
	90°	67.5°	45°	22.5°
Mid Rail Max Energy (Joules)	6,000	7,029	12,000	40,971

End Post Max Energy (Joules) - 90°	3,600
------------------------------------	-------



Material Properties	MEMAPLEX™
Temperature Range	-10°C to 50°C
Ignition Temperature	370°C to 390°C
Flash Point	350°C to 370°C
Toxicity	Not Hazardous
Chemical Resistance	Excellent - ISO/TR 10358
Weathering Stability (Grey Scale)	5/5*
Light Stability (Blue Wool Scale)	7/8**
Static Rating (Surface Resistivity)	1015 - 1016 Ω

\* Weathering scale 1 is very poor and 5 is excellent

\*\* Light stability scale 1 is very poor and 8 is excellent

